

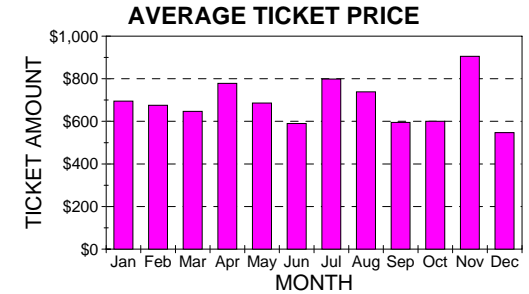
ABC Company
Consolidated

Executive Summary

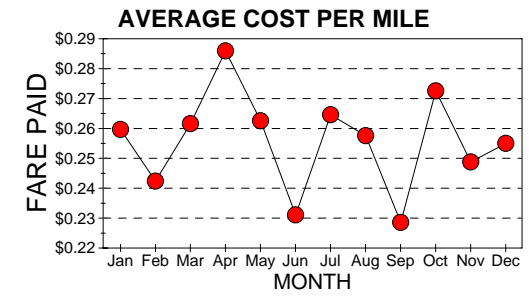
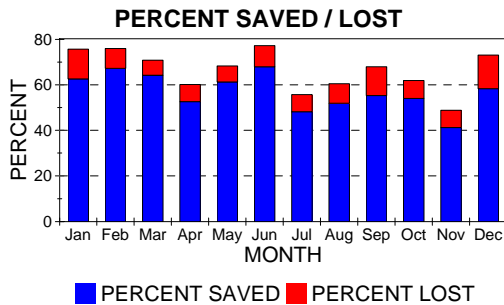
Advantage Travel Management

Period 1: 12/1/2005 TO 12/31/2005 Period 2: 1/1/2005 TO 12/31/2005

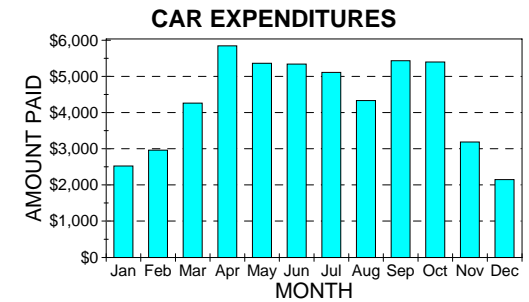
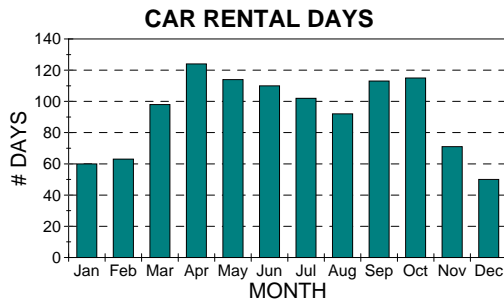
| AIRFARE ANALYSIS | | PERIOD 1 | PERIOD 2 |
|----------------------|--|--------------|----------------|
| FARE FULL FARE | | \$105,877.57 | \$2,044,367.73 |
| SAVINGS TICKET PRICE | | \$44,318.07 | \$867,318.71 |
| AMOUNT SAVED | | \$61,559.50 | \$1,177,049.02 |
| % SAVED | | 58.1 % | 57.6 % |
| FARE LOW FARE | | \$28,704.72 | \$683,477.22 |
| LOST FARE LOST | | \$15,613.35 | \$183,841.49 |
| % LOST | | 14.7 % | 9.0 % |
| TOTAL # OF TICKETS | | 81 | 1263 |
| MILEAGE | | 173,803 | 3,394,640 |
| AVERAGE TRIP PRICE | | \$547.14 | \$686.71 |
| FLIGHT DISTANCE | | 2,146 | 2,688 |
| COST PER MILE | | \$0.25 | \$0.26 |
| REFUNDS # OF REFUNDS | | 3 | 39 |
| REFUND AMOUNT | | (\$2,746.19) | (\$82,179.75) |
| AVERAGE REFUND | | (\$915.40) | (\$2,107.17) |



| TOP FIVE AIR SEGMENTS | # OF SEGS | AMOUNT |
|--|-----------|------------|
| WASHINGTON DC - MANCHESTER | 18 | \$1,387.94 |
| LOS ANGELES - MINNEAPOLIS/ST PAUL | 14 | \$5,431.15 |
| NEW YORK-LAGUARDIA - RALEIGH/DURHAM | 6 | \$1,073.48 |
| NEW YORK-LAGUARDIA - MINNEAPOLIS/ST PAUL | 5 | \$2,860.47 |
| OAKLAND - SEATTLE/TACOMA | 5 | \$700.76 |

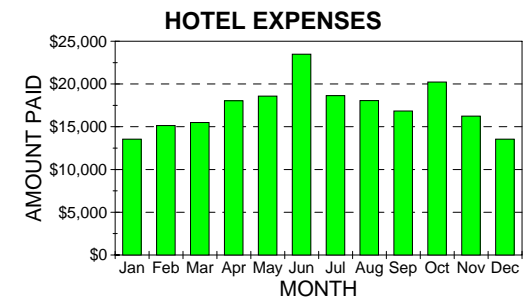
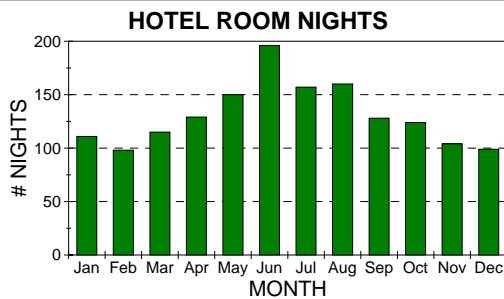


| CAR ANALYSIS | PERIOD 1 | PERIOD 2 |
|------------------|------------|-------------|
| TOTAL CAR COST | \$2,138.07 | \$51,622.29 |
| CARS RENTED | 16 | 478 |
| CAR RENTAL DAYS | 50 | 1112 |
| AVERAGE CAR RATE | \$42.76 | \$46.42 |
| RENTAL DAYS | 3.13 | 2.33 |



| TOP FIVE CAR CHAINS | # OF DAYS | AMOUNT |
|---------------------|-----------|------------|
| NATIONAL | 45 | \$1,836.50 |
| BUDGET | 3 | \$179.97 |
| HERTZ | 2 | \$121.60 |

| HOTEL ANALYSIS | PERIOD 1 | PERIOD 2 |
|--------------------|-------------|--------------|
| TOTAL HOTEL COST | \$13,542.29 | \$207,800.20 |
| ROOMS BOOKED | 40 | 814 |
| ROOM NIGHTS | 99 | 1571 |
| AVERAGE HOTEL RATE | \$136.79 | \$132.27 |
| LENGTH OF STAY | 2.48 | 1.93 |



| TOP FIVE HOTEL CHAINS | # OF NTS | AMOUNT |
|-----------------------|----------|------------|
| EMBASSY SUITES | 23 | \$2,645.00 |
| HOLIDAY INNS | 19 | \$2,400.75 |
| HILTON/CONRAD HOTELS | 11 | \$2,457.00 |
| GEMINI REP. | 9 | \$921.00 |
| HILTON INTERNATIONAL | 7 | \$1,365.00 |